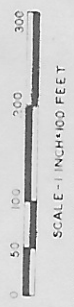


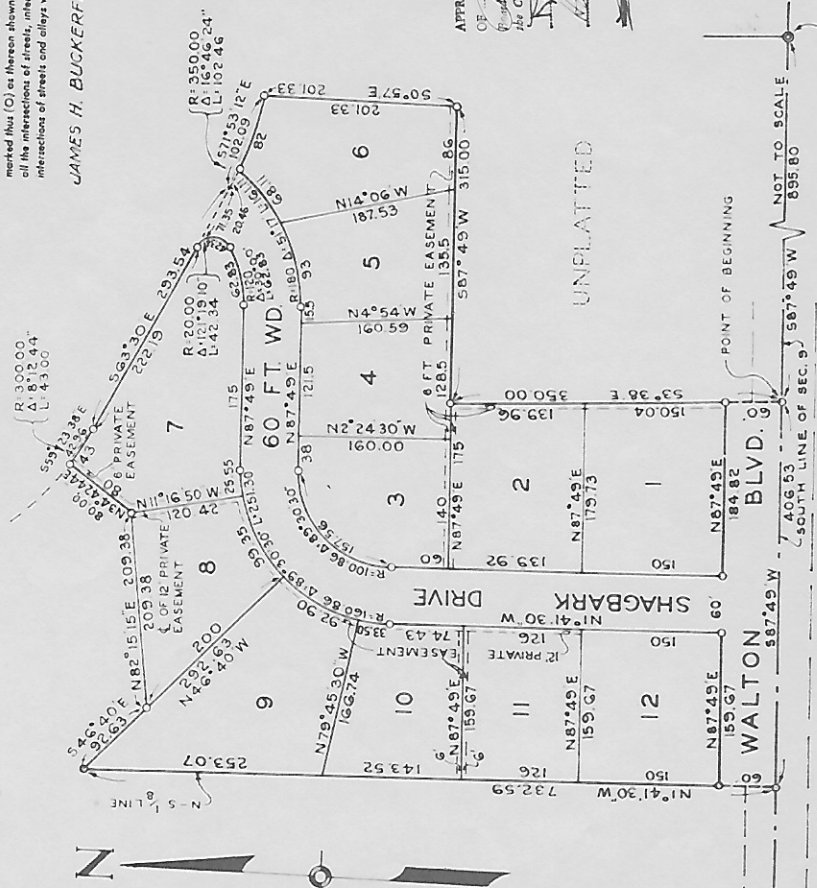
"LOCHMOOR HILLS"

PART OF THE E. 1/2 OF THE S.W. 1/4 OF SEC. 9 T.3N, R.11E., AVON TWP., OAKLAND CO., MICH.



SCALE - 1 INCH = 100 FEET
ALL DIMENSIONS ARE IN FEET AND DECIMALS. THEREOF
ALL CURVE DISTANCES ARE MEASURED ALONG THE ARC

EXAMINED AND APPROVED
Date: 12/11/29
OTIS M. SMITH
A. D. H. GENERAL
C. L. WAGNER, P. E. ENGINEER



SOUTH 1/4 CORNER
SEC. 9 T.3N, R.11E.
AVON TWP.

UNPLATTED

Plat approved to provisions of Act 172 of P. A. of 1929, as amended, this 17 day of February, 1932.

OAKLAND COUNTY PLAY BOARD

Approved by the Board of Supervisors of Oakland County, Michigan, at a meeting held at the County Administration Building, East Lansing, Michigan, on the 11th day of February, 1932.

CERTIFICATE OF MUNICIPAL APPROVAL

This plat was approved by the Township Board of the Township of Avon at a meeting held at the Township Office, Avon, Michigan, on the 11th day of February, 1932, and that the width of lots is in compliance with requirements of Section 30, Act 172, of 1929, as amended.

Frances O. Covert,
Clerk

SURVEYOR'S CERTIFICATE

I hereby certify that the plat hereon delineated is a correct one and that permanent metal monuments consisting of bars not less than one-half inch diameter and 35 inches in length, or shorter bars of not less than one-half inch in diameter, topped over each other at least 6 inches with an over-all length of not less than 36 inches, fastened in a concrete cylinder of least 4 inches in diameter and 35 inches in depth have been placed at points marked thus (O) as hereon shown at all angles in the boundaries, at the four corners, at all the intersections of streets, intersections of alleys, or of streets and alleys, and at the intersections of street and alleys with the boundaries of the plat as shown on said plat.

JAMES H. BUCKERFIELD
Registered Land Surveyor & Professional Engineer

APPROVED THIS 15th day of February, A.D. 1932
By the County Clerk, Commissioner of the County of Oakland, State of Michigan
DORIS G. SMITH
County Clerk

DEDICATION

KNOW ALL MEN BY THESE PRESENTS, that we, Edward G. Johnson, Ida M. Johnson, his wife, as title holders, and Lochmoor Development Company, a Michigan Corporation, by Robert C. Smith, President, and Edward A. Potere, Secretary-Treasurer, as contract purchasers, as proprietors, have caused the land embraced in the annexed plat to be surveyed, laid out and platted, to be known as "Lochmoor Hills", part of the E. 1/2 of the S. W. 1/4 of Sec. 9, T.3N, R.11E., Avon Twp., Oakland Co., Mich., and that the streets shown on said plat are hereby dedicated to the use of the public, and all easements indicated as "private easements" are not dedicated to the use of the public, but the right to use such private easements is hereby reserved for public utilities and for any other uses designated hereon, and no permanent structures are to be erected within the lines of said easements.

Signed and Sealed in the presence of:

Lochmoor Development Company
Robert C. Smith, President
Edward A. Potere, Sec.-Treas.
Edward G. Johnson
Ida M. Johnson
Ida M. Johnson

ACKNOWLEDGEMENT

STATE OF MICHIGAN }
COUNTY OF OAKLAND }

On this 11th day of JANUARY, A. D., 1932 before me, Arthur R. Cox, a Notary Public in and for said county of Oakland, Michigan, did appear to me, personally known, who being each by me duly sworn did say that they are the President and Secretary-Treasurer, respectively, of the Lochmoor Development Company, a Michigan Corporation, and that the seal affixed to said instrument is the corporate seal of said Corporation, and that said instrument was signed and sealed in behalf of and the said Robert C. Smith and Edward A. Potere, acknowledged said instrument to be the free act and deed of said Corporation. Also personally came Edward G. Johnson and Ida M. Johnson, his wife, to me personally known, who being each by me duly sworn, did say that they are the persons who executed the above dedication and acknowledged the same to be their free act and deed.

OAKLAND COUNTY, MICH.
No. 17714
I HEREBY CERTIFY THAT THE FOREGOING IS A TRUE AND CORRECT COPY OF THE ORIGINAL AS FILED IN MY OFFICE.
ARTHUR R. COX
Notary Public, Oakland County
My Commission expires MAR. 12, 1935

DESCRIPTION OF LAND PLATTED

The land embraced in the annexed plat of "Lochmoor Hills", part of the E. 1/2 of the S. W. 1/4 of Sec. 9, T.3N, R.11E., Avon Twp., Oakland Co., Mich., is described as follows: Beginning at a point on the South line of said Sec. 9, said point being distant S87°49'W, 895.80 ft. from the South 1/2 corner of said Sec. 9; thence S87°49'W, along said Section line, 406.53 ft. to the North-South 1/8 line; thence northerly along said 1/8 line N1°41'30"W, N1°41'30"W, 732.59 ft.; thence S46°40'E, 92.63 ft.; thence N82°15'15"W, 209.38 ft.; thence N34°42'44"W, 80.00 ft.; thence along a curve to the left, (rad. 300.00 ft., long chord bears S59°23'38"E, 42.36 ft.), a distance of 43.00 ft.; thence S65°30'E, 297.54 ft.; thence along a curve to the left, (rad. 350.00 ft., long chord bears S71°52'12"W, 102.09 ft.) a distance of 102.46 ft.; thence S02°57'E, 201.33 ft.; thence S87°49'W, 315.00 ft.; thence S50°28'E, 350.00 ft. to the point of beginning.

This plat contains twelve lots, numbered from 1 to 12, both inclusive.